

BUSINESS IOT SOLUTION

ESL & ESD



E-ink Shelf Label



Electronic Shelf Display



EATACCN
BUSINESS IOT

Table of Contents

| | |
|---------------------------|-------|
| ESL & ESD Introduction | 2 |
| About EATACCN | 3-4 |
| ESL System | 5-7 |
| ESL Datasheet & Case | 8-11 |
| ESD Introduce & Datasheet | 12-14 |
| ESD Advantages & Cases | 15-19 |

Introduction

To create a distinctive business environment EATACCN offers both e-paper and colored digital signage solutions. EATACCN's wireless Electronic Shelf Label (ESL) system is based on 2.4Ghz portocol,E-ink label that provides advantages in performance, cost and low power consumption.

Our ESLs are suitable for industries such as retail, fashion, catering, mobile shops, jewelry, home appliances, pharmacy, industry, warehouse and room signage. The benefits of digital signage are that information can be presented more easily, prices can be adjusted instantly, and the signs can adapt to the context and audience, even interactively. ESL solutions aim to dramatically impact how companies operate their businesses providing a superior platform that can improve profitability and enable new customer-facing applications, promotions and loyalty programs.

2.4GHz Electronic Shelf Labels offer the most clear and visible display. Connected by our 2.4GHz + 5GHz wireless protocol, our labels can be updated multiple times each day and under normal usage conditions (3 times screen changes per day), batteries typically last for up to 5-10 years.

EATACCN wireless protocol uses less energy because of its time intelligent and leverages the ESL infrastructure key component of the connected store enabling retailers to connect directly with their customers at the point of decision. Our Electronic Shelf Labels are available with LED lights and NFC capability which are controlled centrally by the cloud platform.

About EATACCN

EATACCN has provided retailers with electronic solutions to improve the efficiency of their retail operations. For digital shelf edge complete solutions supplier of the world's most reliable electronic shelf labels system, LCD shelf stretch display.

Since 2007, EATACCN Solutions has provided retailers with electronic solutions to improve the efficiency of their retail operations.

Leading revolution in labeling systems in supermarkets and digital stores. Increasingly, retail began to replace paper price displays in favor of electronic shelf labels (ESL). And ODM for the smart LCD shelf edge display, The electronics shelf edge labeling (ESEL) products solutions. Our products and solutions have been involved in innovation and retail transformation. By developing solutions and services that are easy to use, we offer our clients both technological products which are adapted to each their needs.

- 5,000 square meters of own new factory completed.
- Layout WLAN/IoT smart hardware development.
- Introduction of fully automated SMT/DIP production line.
- Initial formation of a complete supply chain system.
- Comprehensive layout of enterprise-class wireless WLAN-related production facilities.



ESL Solutions for retail

ESL Solutions offers IoT technology, the reliable price automation solutions. From battery longevity to speed and readability, the labels are designed to help retailers fulfill their operational strategy such as: centralizing product information, meeting omnichannel requirements, executing dynamic pricing, building their marketing strategy and developing unique shopping experience.



No more paper

Eliminate the costs and labour associated with printing and managing paper price tickets, tags and promotional signs by going digital.

Automatic price changes

Instant and accurate price and promotional updates at the shelf-edge give retailers ultimate flexibility on everything from flash sales to competitor price-matching.

Retail marketing campaigns can now be successfully deployed by the IoT technology



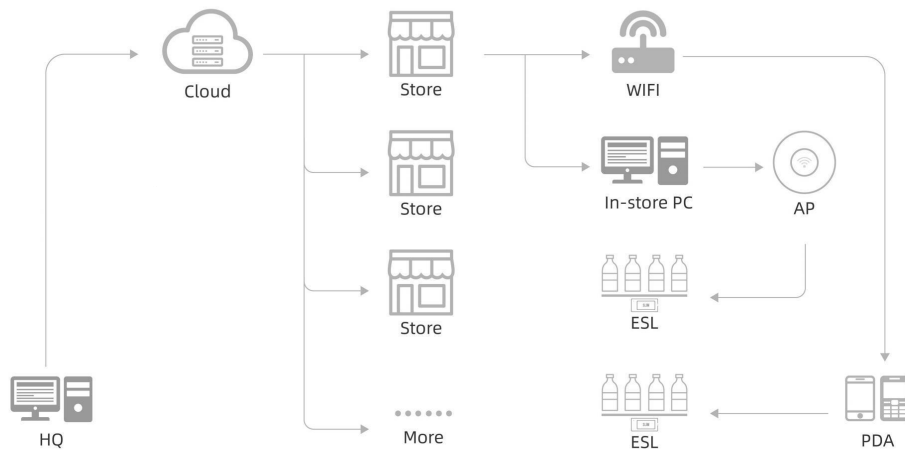
The Cloud system overviews products and price to maintain a live, accurate planogram.

System can plan product layouts and promotional activity digitally. Store staff get help from the ESL to put stock in the right place and verify it meets plan.

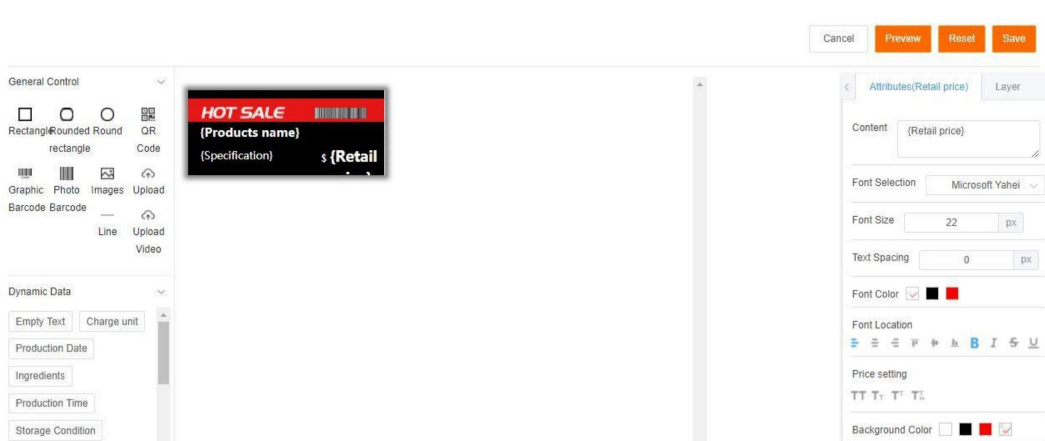
Accurate prices and promotions are automatically delivered to the right places through the digital shelf edge. From then on, it's easy to find products in-store, and access up to date stock information at the shelf edge. EATACCN solution highlights:

- Full centralized control and accuracy
- High flexibility in display content that is user-configurable
- Long-lasting usage
- High speed bi-directional communication
- Integrates with existing (retail) systems

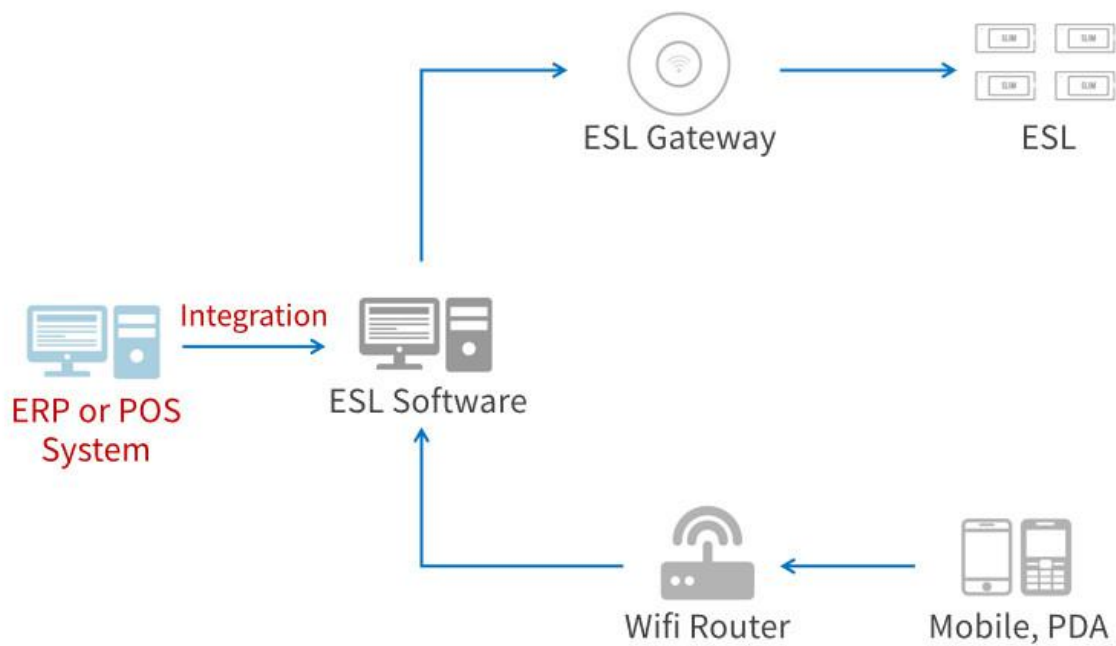
System Flow



Template Editor / What you see is what you get



The Infrastructure of ESL System



TECH SAAS



PRIVATE CLOUD



LOCAL SERVER



CENTRAL SERVER

ESL system can be deployed to your private cloud server, local server (individual store) and central server (chain stores).

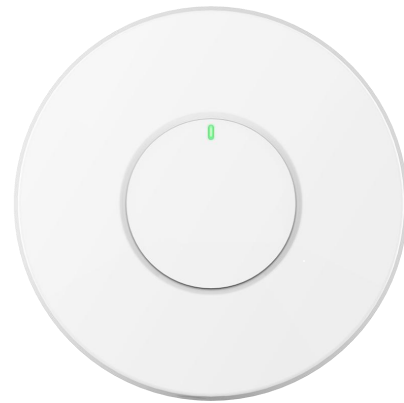
2.4GHz + 5GHz wireless protocol, our labels can be updated multiple times each day and under normal usage conditions (3 times screen changes per day), batteries typically last for up to 5-10 years.

EATACCN wireless protocol uses less energy because of its time intelligent and leverages the ESL infrastructure key component of the connected store enabling retailers to connect directly with their customers at the point of decision. Our Electronic Shelf Labels are available with LED lights and NFC capability which are controlled centrally by the cloud platform.

Key Features

- Communicate to ESL units automatically in the initial setting
- High-speed bi-directional communication
- Simple installation, plug & play High capacity and wide coverage

| General Specification for Tag2.1 | |
|----------------------------------|---------------------------------------|
| Model | YAP-01 |
| Total dimensions (mm) | 178*38*20mm |
| Frequency | 2.4GHz-5GHz |
| Working Voltage | 4.8-5.5V |
| Protocol | Zigbee (private) |
| Chipset | Texas Instrument |
| Battery | Up to 8 years battery life |
| Operating Temperature | 0°C-50°C |
| Material | ABS (Acrylonitrile butadiene styrene) |
| Wifi speed | 1167Mbps |
| Coverage indoor | 30-40m |
| POE | Support |





YAL154

Screen Size: 1.54inch
Weight: 26 g
Appearance: Frame Shield
Chipset: Texas Instrument
Material: ABS
Temperature: 0 C° to 40 C°
Dimension(mm): 53.5*38.8*15
Display Colour: B&W&R/B&W&Y
Display Mode: Dot Matrix Display
Resolution: 200 × 200 pixel
DPI: 183
Water Proof: IP53
LED Light: None



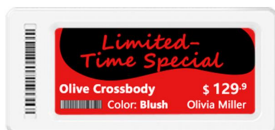
YAL213

Screen Size: 2.13inch
Weight: 33 g
Appearance: Frame Shield
Chipset: Texas Instrument
Material: ABS
Temperature: 0 C° to 40 C°
Dimension(mm): 72.8*34.5*13mm
Display Colour: B&W&R/B&W&Y
Display Mode: Dot Matrix Display
Resolution: 250 × 122 pixel
DPI: 183
Water Proof: IP53
LED Light: None



YAL266

Screen Size: 2.66inch
Weight: 36 g
Appearance: Frame Shield
Chipset: Texas Instrument
Material: ABS
Temperature: 0 C° to 40 C°
Dimension(mm): 90.8×42.9*13mm
Display Colour: B&W&R/B&W&Y
Display Mode: Dot Matrix Display
Resolution: 296× 152 pixel
DPI: 183
Water Proof: IP53
LED Light: None



YAL29

Screen Size: 2.9inch
Weight: 45 g
Appearance: Frame Shield
Chipset: Texas Instrument
Material: ABS
Temperature: 0 C° to 40 C°
Dimension(mm): 90.8*42.9*13.7mm
Display Colour: B&W&R/B&W&Y
Display Mode: Dot Matrix Display
Resolution: 296 × 128 pixel
DPI: 183
Water Proof: IP53
LED Light: None



YAL42

Screen Size: 4.2inch
Weight: 83 g
Appearance: Frame Shield
Chipset: Texas Instrument
Material: ABS
Temperature: 0 C° to 40 C°
Dimension(mm): 118*83.8*11.2mm
Display Colour: B&W&R/B&W&Y
Display Mode: Dot Matrix Display
Resolution: 400× 300 pixel
DPI: 183
Water Proof: IP54
LED Light: None



YAL75

Screen Size: 7.5inch
Weight: 201 g
Appearance: Frame Shield
Chipset: Texas Instrument
Material: ABS
Temperature: 0 C° to 40 C°
Dimension(mm): 183*118*11.2
Display Colour: B&W&R/B&W&Y
Display Mode: Dot Matrix Display
Resolution: 640× 384 pixel
DPI: 183
Water Proof: IP54
LED Light: None

Slim Series



YAS213

Screen Size: 2.13inch
Weight: 32 g
Appearance: Frame Shield
Chipset: Texas Instrument
Material: ABS
Temperature: 0 C° to 40 C°
Dimension(mm): 71*34.5*11.2/
Display Colour: B&W&R/B&W&Y
Display Mode: Dot Matrix Display
Resolution: 250 × 122 pixel
DPI: 183
Water Proof: IP54
LED Light: 7 colors LED



YAS266

Screen Size: 2.66inch
Weight: 38 g
Appearance: Frame Shield
Chipset: Texas Instrument
Material: ABS
Temperature: 0 C° to 40 C°
Dimension(mm): 90.7×42.8*11.2mm
Display Colour: B&W&R/B&W&Y
Display Mode: Dot Matrix Display
Resolution: 250 × 122 pixel
DPI: 183
Water Proof: IP54
LED Light: 7 colors LED



YAS29

Screen Size: 2.9inch
Weight: 39 g
Appearance: Frame Shield
Chipset: Texas Instrument
Material: ABS
Temperature: 0 C° to 40 C°
Dimension(mm): 90*42*11.2mm
Display Colour: B&W&R/B&W&Y
Display Mode: Dot Matrix Display
Resolution: 296× 128 pixel
DPI: 183
Water Proof: IP54
LED Light: one color LED



YAS42

Screen Size: 4.2inch
Weight: 83 g
Appearance: Frame Shield
Chipset: Texas Instrument
Material: ABS
Temperature: 0 C° to 40 C°
Dimension(mm): 118*83.8*11.2mm
Display Colour: B&W&R/B&W&Y
Display Mode: Dot Matrix Display
Resolution: 400× 300 pixel
DPI: 183
Water Proof: IP54
LED Light: 7 colors LED



YAS75

Screen Size: 7.5inch
Weight: 201 g
Appearance: Frame Shield
Chipset: Texas Instrument
Material: ABS
Temperature: 0 C° to 40 C°
Dimension(mm): 183*118*11.2
Display Colour: B&W&R/B&W&Y
Display Mode: Dot Matrix Display
Resolution: 640× 384 pixel
DPI: 183
Water Proof: IP54
LED Light: 7 colors LED



YAF266

Screen Size: 2.66inch
Weight: 28 g
Appearance: Frame Shield
Chipset: Texas Instrument
Material: ABS
Temperature: 0 C° to 40 C°
Dimension(mm): 85.9*41.9*9.1mm
Display Colour: B&W&R/B&W&Y
Display Mode: Dot Matrix Display
Resolution: 296× 152 pixel
DPI: 183
Water Proof: IP54
LED Light: 7 colors LED



RA-01

Item Name: Shelf rail
Model No.: RA-01
Color: Transparent
Material: High strength PC
Support ESL Size:
1.54"/2.13"/2.66"/2.9"/4.2"



CL-01

Item Name: 360 degree adjustable Clip
Model No.: CL-01
Universal Clamp Clip for flat shelf/wire
basket/wire etc
Works with Adapter AD-01
Clip holder adjustable angle 360 degree
Color: grey
Material: ABS
Clip mouth width: 0-34mm
ESL Size: 1.54, 2.13, 2.66, 2.9, 4.2, 7.5inch



CL-02

Item Name: Vertical Clip for Flat Surface
Model No.: CL-02
Clip mouth width: 0-15mm, suitable for
hanger with diameter less than 15mm
Works with Adapter AD-01
Thickness: 12-20mm
Color: transparent
Material: PC



ST-02

Item Name: Table stand support
Model No.: ST-02
Works with Adapter AD-01
Color: transparent
Material: PC
ESL Size: 1.54, 2.13, 2.66, 2.9, 4.2inch



HOK-01/02

Item Name: T-peg Hook Support
Model No.: HOK-01/02
Adjustable angle function
Model number: HOK01: for diameter 3-
6mm T hook
Model number: HOK02: for diameter 6-
9mm T hook
Works with Adapter AD-01
Color: transparent
Material: PC



BOX-01

Item Name: Double-side Hanging
Display board
Model No.: BOX-01
Double-side ESL Hanging, no need
promotion paper
Options: Vertical & Horizontal
Color: grey
Material: PC
Frame size: 160*210*37mm

Applications Cases

Electronic Shelf Label solution is widely used in business halls, department stores, supermarkets, groceries, fresh stores, bakeries, convenient stores, pharmacies, etc. It can help increase operation efficiency, automate low value-added processes, and provide better customer experience.

For Retail Enterprises

- Variable price automatic management, reduce labor costs.
- Paperless operation throughout, saving consumables, green environmental protection, energy saving;
- Real-time promotion, different environments (seasons, cycles, etc.), rapid promotion and execution.



Casual shirt(Woman)

Ingredient: 55%flax, 45%chemical fiber

**50%
SALE**

\$158

79\$



EATACCCN company Shelf edge LCD display design for supermarket/retail shop shelf, replacement the traditional paper display. It suits for 60cm,90cm,120cm different shelf size.

Highlights

- ✓ High screen resolution
- ✓ Natural display with vivid colors
- ✓ Digital signage software
- ✓ New retail solutions
- ✓ Superior industrial design
- ✓ Shelf edge installation
- ✓ Multi-sizes optional
- ✓ Wifi cloud CMS control 24 hours



Cloud Wifi Management

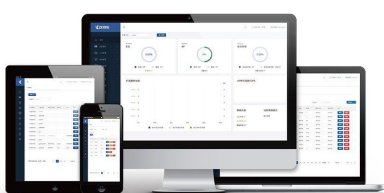
With our CMS cloud platform you can easy to design the media,advertise,labels and promo information,Full functions of DIY to make panel as thoughts as you want

We provide a User Interface (UI)to users through CMS , which allows users to upload and organize content, organize the content into a playback methodology (think playlists), create rules and conditions around playback, and distribute the content to a media player or groups of media players.Uploading, managing and distributing content is only one part of running a digital signage network. If you're looking at deploying multiple screens across various locations, it will be critical to your success to be able to manage the network remotely.

The best device management platforms are very powerful tools that collect information on the devices, report that data and are able to take action.

The successful download and playback of media assets, gathering the playback data from media player software Checking on the health status of the media player: free disk space, memory usage, temperature, network status, etc.

Similar to above, check on the status of the screen the media player is either attached to or embedded in Updating components of the system: software updates for media players and firmware updates for screens.

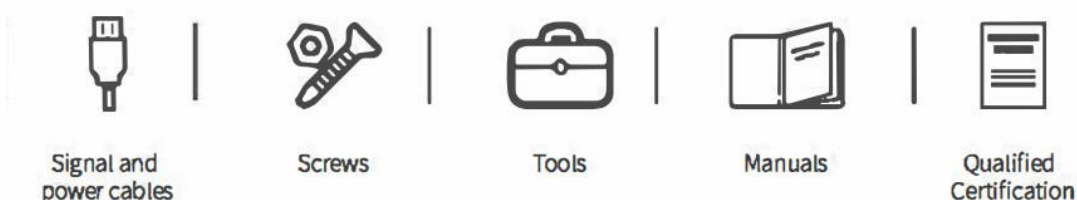
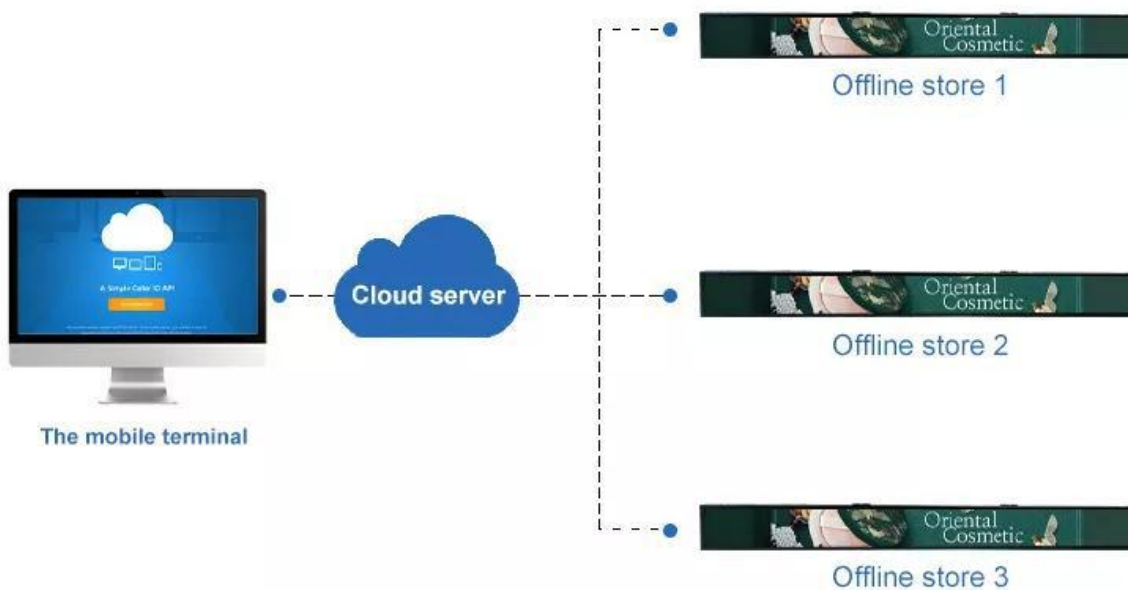


The ESD solutions

EATACCN solutions shelf edge displays are a range of digital signage products designed for retail shelves. This 23/35/47 inch display comes with an excellent industrial design, sleek look and superior capabilities you can depend on. Plus, its installation and deployment are simple and secure so you can get started in no time. LCD smart edge displays run perfectly with our digital signage software, a proven and trusted platform that offers rich functionality for sophisticated digital signage needs. By applying this shelf digital signage solution to your new retail landscape, you can focus on your marketing strategies and explore more possibilities.

ESD (Electronic Shelf Display)

Offers dynamic & vibrant picture quality which attracts eyeballs of shoppers. Easily price a product and launch promotion campaigns, showing advertisement and relevant merchandise information.



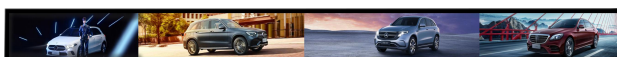
Suitable for chained retailing stores with a wide range of products: During re-allocating merchandise on shelf, speeding up display content adjustment accurately especially for periodic price change. Saving manpower and operation costs which improves in-store efficiencies.

The ESD Models



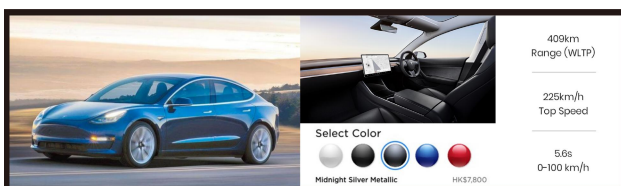
23.1"

Screen Size: 23.1 Inch
 Active Display Area: 585.6(Length)x48.19(Width)mm
 Pixel Pitch(mm): 0.10167(H)x0.305(V)
 Native Resolution: 158*R.G.B*1920
 Aspect Ratio: 20:9
 Brightness(Type): 400Nits
 Contrast Ratio(Type): 3000:1
 Viewing Angle: 178(H)/178(V)
 Video Format: AVI,H.264,MKV,MP4,MPEGetc.
 Picture Format: JPG,JPEG,BMP,PNG,GIF



35"

Screen Size: 35 Inch
 Active Display Area: 878.4(H)x48.19(V)
 Pixel Pitch(mm): 0.10167(H)x0.305(V)
 Native Resolution: 158*R.G.B*2880
 Aspect Ratio: 20:9
 Brightness(Type): 400Nits
 Contrast Ratio(Type): 3000:1
 Viewing Angle: 178(H)/178(V)
 Video Format: AVI,MOV,MKV,,MP4,M4V,F,MPG,ASF,TP,TRP,TS,H.265,H.264
 Picture Format: JPG,JPEG,BMP,PNG,GIF



36"

Screen Size: 36 Inch
 Active Display Area: 878.112(H)x242.676(V)
 Pixel Pitch(mm): 0.15245(H)x0.4494 (V)
 Native Resolution: 1920xR.G.B.x540
 Aspect Ratio: 3:2
 Brightness(Type): 500Nits
 Contrast Ratio(Type): 3000:1
 Viewing Angle: 178(H)/178(V)
 Video Format: AVI,H.264,MKV,MP4,MPEG,etc
 Picture Format: JPG,JPEG,BMP,PNG,GIF



Nowadays, supermarket retail is a must-have industry in global cities, involving people's livelihood. Looking at the many traditional paper signs on the shelves in the supermarket, the description of the goods, the details, and the barcode. Each time you change or adjust the goods, you need to reprint the barcode of the goods. The workload is heavy, cumbersome, and a waste of labor and time. Shelf Edge Display solves this kind of tedious work and frees up more labor and time.

It can display product details, dynamic and gorgeous video animations, and stimulate consumers to buy more. At the same time, it also played a role in advertising.

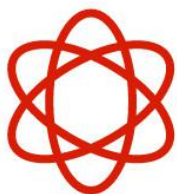
Shelf Edge LCD Display is a new force in the digital retail era, Shelf Edge LCD Display is a perfect substitute for traditional paper price tags. Today, It complements ESLs and becomes an indispensable part of the digital retail network.

Drive sales at shelf edge



Our video shelf edge displays give retailers and brands a unique opportunity to advertise to customers at the point of decision. For the first time digital promotions can be deployed which engage, inform and convert shoppers. Retail marketing campaigns can be planned and delivered in an instant. The result– incremental revenues across products, categories and stores.

Streamline operations



Retailers and brands waste millions every year deploying and managing paper price tickets and promotions. The process of printing, shipping, sorting and deploying paper tickets in store presents major challenges frequently resulting in pricing errors and poorly deployed brand marketing campaigns. Our digital shelf edge platform automates pricing and promotional updates

Improve Accuracy



Our digital shelf edge system removes the challenges of auditing paper labels and marketing campaigns by automatically checking and verifying that the pricing and promotional material on display matches the retailers' central database and the products displayed on the shelf. A major benefit of this is that for the first-time retailers have access to live in-store planograms.

The Digital Shelf-Edge



Video digital shelf edge displays are just the visible front of our digital platform. Our easy to integrate technology allows retailers to automate pricing updates, instantly deploy retail marketing campaigns, manage stock and planograms and improve the customers in-store shopping experience.

Cloud information release management system

Edge Display Cloud information release management system :

1. Easy to operate, double-ended linkage- Support PC/mobile dual terminal operation- Mobile phone scan to quickly add devices;
2. Multiple devices, easy access- Stretched bar lcd display, Digital signage, Shelf edge display etc. can be accessed, support Android/Windows system, switch between Chinese and English;
3. Remote control of screen status, early warning of abnormalities- Timing switch, volume control, brightness adjustment, cache cleaning, remote screen capture, network monitoring, equipment exception warning;
4. Unlimited split screen, supports rich multimedia components- One-click drag and drop, split the screen at will, the same page can place pictures and videos, clock weather, interactive buttons, promotion countdown, text, live streaming and other small components;
5. Multi-level authority distribution, refined authority management- Powerful authority system, different sub-account users have different functional interfaces, refined authority management;
6. One-key delivery of synchronous playback, support U disk publication- One-key parallel distribution, control multiple advertising players to play synchronously, support material classification management, upload large files, and use U disk to publish when the terminal network is unstable or disconnected;
7. Data is visible and multi-dimensional reports are provided- Advertising data report Equipment statistics report Facial recognition passenger flow statistics User operation log;





Shelf Edge LCD Display

- It can be easily installed on shelves of various materials and sizes
- It can play multiple video, pictures, scrolling text and more
- It shows dynamic prices, discounts and more for items
- It runs on a proven digital signage platform of great capability
- It has an excellent industrial design, sleek look and high quality original LCD screen

Sizes: 23.1" | 35" | 36" | 40" | 47"

Digital Signage Retail

It is always important to make customers feel comfortable in the store and to have confidence and recognition of the brand. This may be the most sustainable way to make sales growth, albeit not the easiest way. In fact, a well-designed storefront environment speaks more than a good employee. It is our mission to play its greatest value.



"Statistics say 85% of decisions are made directly in front of the shelves"

– Shelf EATACCN

Shelf Edge Digital Signage displays are mounted on shelves in retail shops in order to influence a customer's decision at the point of purchase replacing static shelf talkers with captivating displays that have video and audio playback in order to make decision making contact with the client.

Consumers are consistently looking for the best balance between price and perceived product quality and there is no better time to influence the decision of the client than differentiating your product right at the point of purchase.

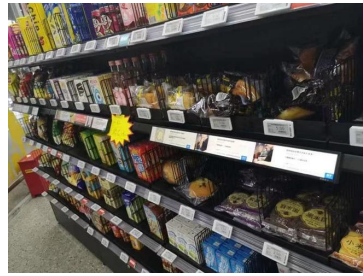
Using video and audio, it is easier to capture ones attention, show the product in use and create an emotional experience in order to influence the purchase of a product.



Advantages of Shelf Edge displays
Inspire shoppers with brilliant video
Attract passer-by's attention
Unlimited product information
Promotion information
Increase your sales
Create an emotional connection and
influence consumers decision



The ESD Cases



Suitable for chained retailing stores with a wide range of products: During re-allocating merchandise on shelf, speeding up display content adjustment accurately especially for periodic price change. Saving manpower and operation costs which improves in-store efficiencies.

With package of screws, accessories hardware, wall mount bracket, easy to install on the shelves, safely by holder fixed on shelves or wall. Customized the back panel for different requirements of Edge sizes or hanging ways.

Contact US

N.128,1st Prosperity Rd
3003 R&F Center
HengQin,ZhuHai,China

E : sales@eataccniot.com

T : +86 756 8868920

/ +86 15919184396

www.eataccniot.com

